

VMFA ON THE ROAD Exhibition

Love, Laughter, Tears: An Artist's Guide to Emotions

FAMILY VISIT GUIDE

This guide offers families some helpful tips for visiting the Artmobile



"A work of which isn't based on feeling isn't work at all."

-Paul Cezanne

This exhibition examines the complex relationship between art and emotion across various cultures and time periods. Despite their different backgrounds, the wide range of artists and cultures showcased demonstrate the unifying nature of human emotion.

Emotion and expression have always been integral to the creative process of art making. Artists convey emotions through their use of color, shapes, symbolism, and text. Artworks can reflect personal emotions or the wider mood of a culture or historical period, shedding light on significant events and their impact on people. The power of art lies in its ability to communicate these feelings and messages, fostering conversations and understanding among viewers and communities.

In the aftermath of the Covid-19 lockdown and amid growing societal divisions, emotions, empathy, and self-reflection hold great significance. We invite you to consider the emotions you experience throughout the exhibition. How does the artwork influence your emotional state? What can you learn about your reactions? Engaging with these emotions can lead to a deeper understanding of oneself and others, promoting dialogue and connection.

ARTISTS REPRESENTED

*Norio Azuma *Nell Blaine * Ethan Brown & Federico Cuatlacuatl
*Charles Clough *Warren Corrado *David Alan Harvey
*Daniel Heyman & Lucy Ganje *Leopoldo Mendez *Kiyoshi Saito
*Ben Shahn *Stephen Shames *Toko Shinoda
*Gabriel Sunday Tenabe *Claire Van Vliet

REPRESENTATION OF DIVERSE BACKGROUNDS

Love, Laughter, Tears: An Artist's Guide to Emotions is the latest Artmobile exhibit to travel Virginia as part of Statewide Programs' *VMFA on the Road*. It contains a broad range of artworks in various mediums and include landscapes, portraits, and abstractions from creators of diverse backgrounds, artistic movements, and cultures. The exhibition also features a film and interactive audio-visual elements. Each artwork represents an emotion that the artist has created to express themselves or their community.



Ethan Brown and Federico Cuatlacuatl, "First Landings," Short Film duration 22:51, 2022.

QUICK FACTS ABOUT THE ARTISTS

- In 1906 **Ben Shahn** immigrated with his family from Lithuania to New York. He became a major figure of the social realism movement using painting and printmaking.
- **Kiyoshi Saito**, one of the most important Japanese print artists of the 20th century had his own sign painting business (1920s) while he studied at the Hongo Painting Institute in the evenings.
- **Leopoldo Mendez** is one of the most celebrated printmakers in the history of Mexico. In 1937 he founded *Taller de Gráfica Popular* (Peoples' Graphic Workshop) in Mexico City.
- Although **Nell Blaine** grew up in Virginia, during the 1940s she was the youngest member of the American Abstract Artists when she studied in New York.
- **Claire Van Vliet** is a MacArthur Award winner who in 1955 started *Janus Press* in Vermont. There she has published more than 90 artist's books and created 100s of her own drawings and prints.

Continue QUICK FACTS ABOUT THE ARTISTS

- As an award-winning photojournalist **Stephen Shame's** images are in the permanent collections of over 30 international museums and foundations.
- **Warren Corrado** is inspired by opera themes and named many of his prints after them.
- Beginning in 1974 **Charles Clough** founded *Hallwalls Contemporary Art Center* in Buffalo, New York with other celebrated artists including Robert Longo, Cindy Sherman, and Michael Zwack.
- In 1983 TIME magazine compared **Toko Shinoda's** achievements to Picasso! As early as six years old she was studying Japanese brush paintings (calligraphy).
- **Norio Azuma** developed his screen-printing technique when he studied at the Art Students League in New York, he printed using up to 18 screens.
- In 1986 **Gabriel Tenabe** became the acting director of the James E. Lewis Museum of Art, and now he directs all the museums acquired by Morgan State University.
- **David Harvey** worked for National Geographics when he created his book, *Cuba* (1999), which focused on cultural migration to the Americas.
- **Daniel Heyman's** portraits are in many public collections such as the Metropolitan Museum of Art in New York, Library of Congress in D.C., and Yale University Art Gallery in Connecticut.

MATERIALS & TERMS

Painting: an art discipline that requires applying wet or oily pigment to a surface with a brush.



Acrylic- a water-based fast-drying pigment suspended in acrylic polymer emulsion and plasticizers, silicon oils, defoamers, stabilizers or metal soaps.

Oil-the pigment is mixed with drying oils like linseed oil.

Gabriel Sunday Tenabe, "Oluwari and Yemoja," acrylic (or oil) on canvas, 1968.

Photography: an art discipline that captures images with a process of chemical action of light and other radiation.



Gelatin Silver Print-a black and white photographic process that coats silver salts and gelatin onto glass (light sensitive) and is exposed after capturing an image.

David Alan Harvey, "James Joe's Wedding," gelatin silver print, 1973.

MATERIALS & TERMS: Printmaking cont.

Printmaking: an art discipline that uses physical or chemical reactions to create an image on a surface for the purpose of printing multiples (editions of that image) using a press or hand pressure.

Etching- a technique in intaglio where the exposed metal plate is incised using a sharp metal tool and acid, so it can hold ink. Plates are made of iron, copper, or zinc.

Solar Plate Etching- a steel plate that already has a light-sensitive polymer material on the surface; ready to receive an image for the printmaking process.

Lithograph- a form of printmaking that originates with drawing (greasy material) on a stone that is etched (fixed) into the stone using acid.

Serigraph- is also called silkscreen and screen-printing. It's a technique that pushes ink through a woven mesh screen (at one time it was silk). The stencil fixed into the screen is what transfers onto a surface: paper, metal, wood, plastic, or fabric.



Kiyoshi Saito, "Cat," woodblock print, ink and color on paper, 1954.

Woodcut- a form of relief, a block of wood is carved into and then hand printed.

Reduction Woodcut- a process that uses one wooden block for all the colors by layering the inks from light to dark. This is done one at a time, and the wooden block is cut between each color. Allowing the previous color to be seen as a new color layer is applied.

LAYOUT OF EXHIBITION

As a gallery on wheels, the artmobile represents a portion of the VMFA's permanent collection. It has four sections that includes touch screen computers, touch screen tablets, 13 two-dimensional works of art, a film and area for distance learning.



TIPS FOR VISITING

Explore the art. When you visit the exhibition, take time to look carefully at a few works of art rather than walking quickly through the space.

Look together. Explore artworks in the galleries as a family and discuss what you see, think, and wonder.

Try an activity. Try some of the activities that follow to enjoy a more meaningful experience of the works of art. Additional activities are also available on the VMFA Learn website www.vmfa.museum/learn.

ENGAGEMENT ACTIVITIES

Strike a Pose- Artists often have specific reasons for the poses of the people in their artwork. Sometimes just by **mimicking the poses**, you can understand more about the art even before getting any additional information. Do the following with a chosen work of figural art (a work of art that has a person in it).

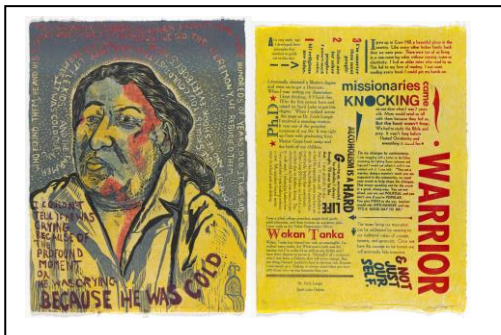
Without looking at the label, study the **gestures** and **body language** of a figure you see. Carefully move your body and adjust your facial expression to match that of the figure. What does doing this tell you about what the figure may be thinking or feeling?

Perceive, Know, Care About- Examine a figure that is featured in a work of art and consider the following. *What might you, as this person **perceive** (think about how the person would be using his or her five senses)? *What might you, as this person, **know about or believe**? *What might you, as this person, **care about**?

If time permits, now take on the persona of the artist. Use these questions to help imagine the artist's experience and motivations.

Before and After- Sometimes artists create multiple works of art to tell a whole story. Sometimes they only show us part of a story, leaving the rest up to us and our imaginations.

Chose an artwork that seems to have a story. Examine the scene and then sketch what you imagine might have occurred before or after the moment the artist chose to represent.



Daniel Heyman & Lucy Ganje, "I Couldn't Tell if He was Crying", color reproduction woodcut printed on handmade mulberry and North Dakota native milkweed paper, 2015.

WHEN YOU ARE DONE VISITING *VMFA On the Road*

We value your feedback. Please take time to answer a few survey questions. It will take a couple minutes. Your answers will help us know how effective we are in sharing the VMFA collection with you.



<https://www.surveymonkey.com/r/CMDRYN8>

Reflect on what creativity is to you. Where has it taken you, or where can it take you? Was it a physical or mental journey? What did you produce or make from it?

Share what you experienced with others. Let others know about the various artworks that were created by artists from Virginia. What was your favorite? What did you already know? What did you learn? What will you never forget?

See **traveling schedule** at <https://vmfa.museum/exhibitions/exhibitions/vmfa-on-the-road/>

VMFA on the road
An Artmobile for the 21st Century